

DigiCamControl
for
Technical Photography

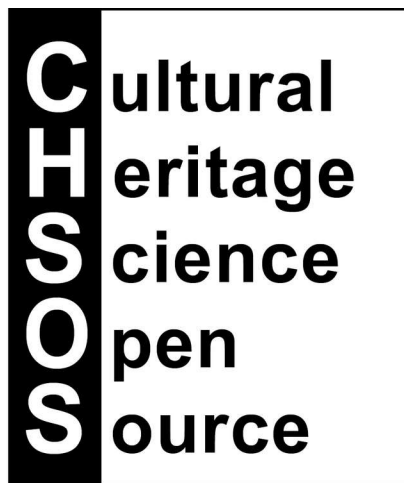


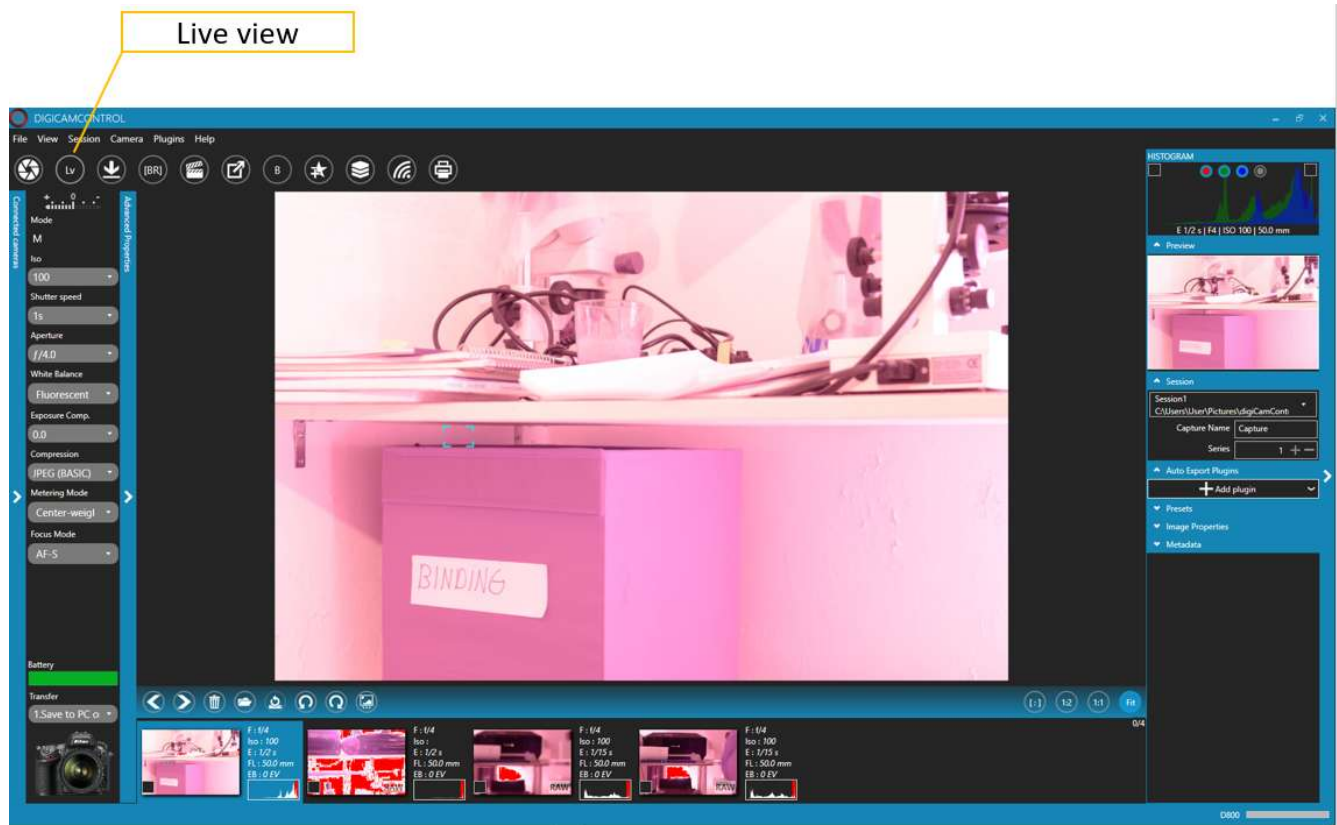
Table of Contents

Shooting.....	3
Focus.....	4
Exposure.....	4
Saving images.....	5
Automatic shooting with the panohead.....	7

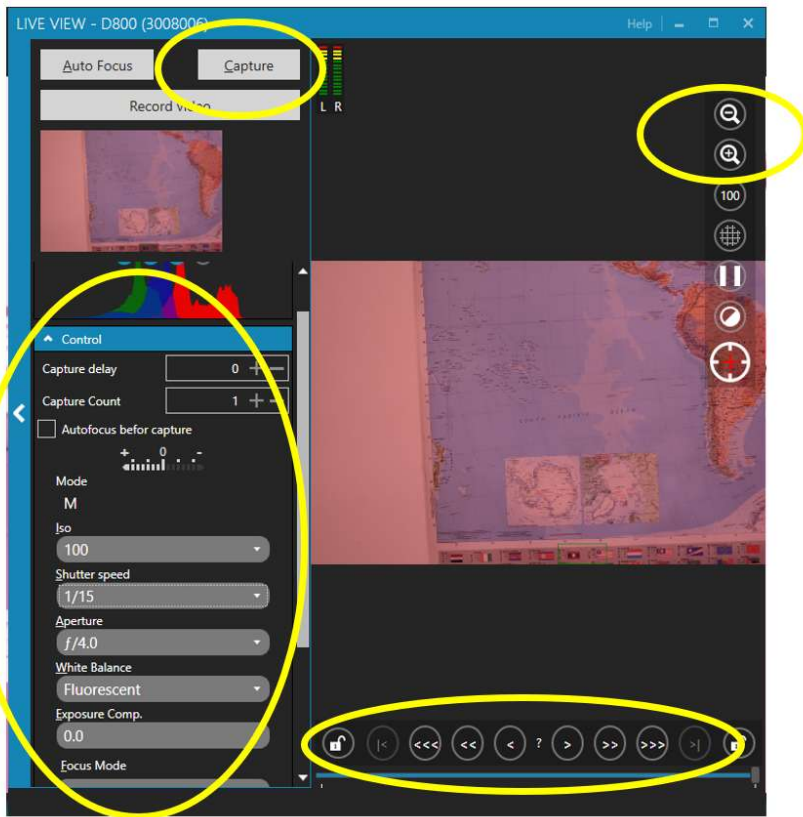
Shooting

Launch digicamcontrol with the camera connected through USB. The software automatically recognizes the camera.

Click on LIVE VIEW button to open the LIVE VIEW window. Press CAPTURE to acquire the image with the current parameters and focus.



From this window we can set up all the other parameters for the acquisition of the image.



Focus

Use the magnify buttons to zoom on the target and use the buttons on the bottom of this window to focus the lens. Remember to switch the camera and lens to auto focus.

Exposure

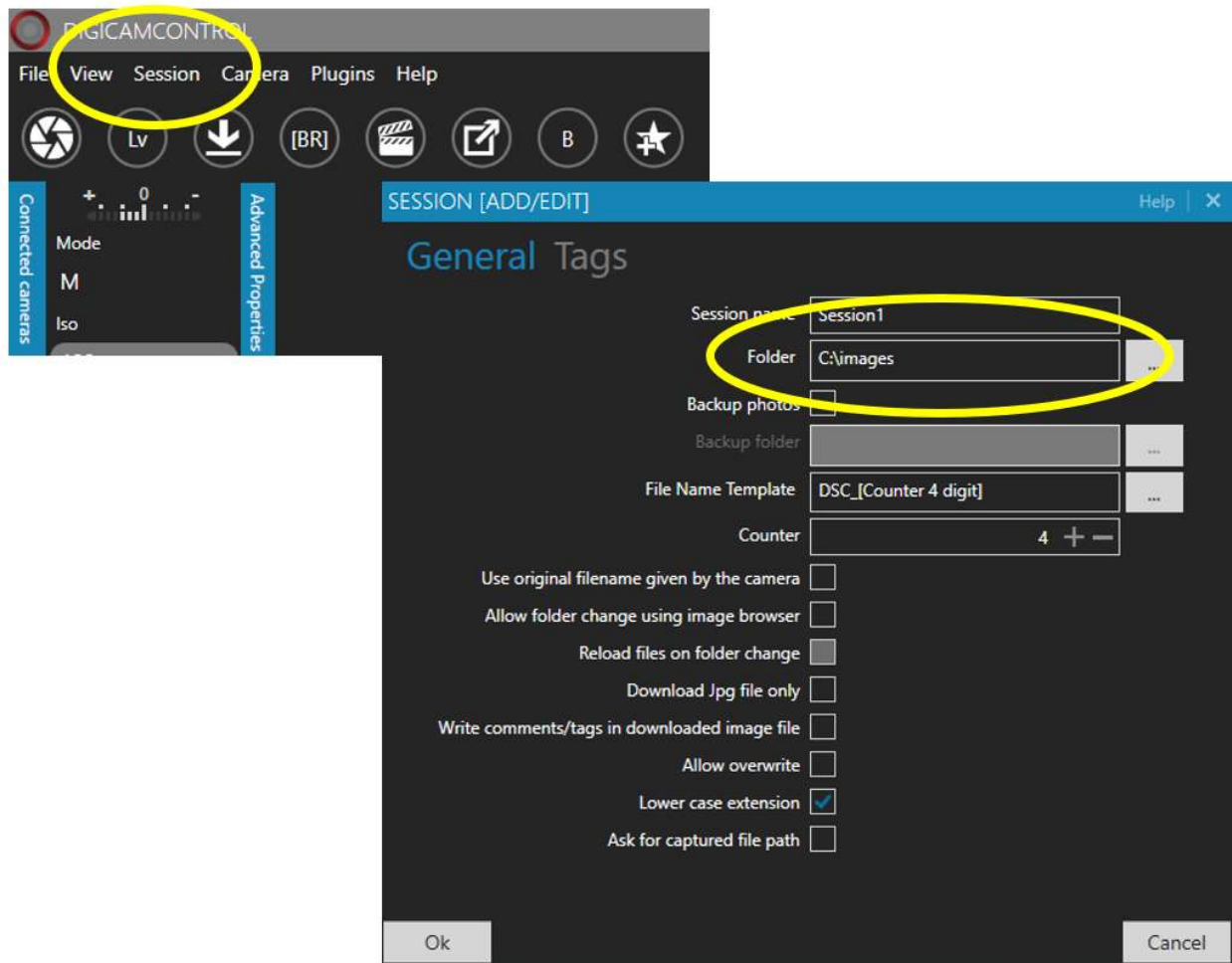
In the “CONTROL“ tab we set up ISO (recommended 100), shutter speed and aperture. We control the “luminosity” that shows the histogram (of the currently zoomed area) where we can chose to see as false color the under exposed and or over exposed areas.

Saving images

Images can be saved on the camera and /or on the PC connected through USB. We recommend to save the images on the camera and then transfer them to the PC. Saving the images directly to the PC can cause some issues because the RAW images are large files and the transferring can take long. It is safer to save them first on the camera and from there read directly in the PC. By the way, once the camera is connected to the laptop with USB cable, the SD card is visible as a folder and from there it is immediate to operate on the files.

In case we want to save the images directly to the PC, in the menu, select where the images are being transferred, clicking on “Session” and in the drop down menu select “EDIT CURRENT SECTION”.

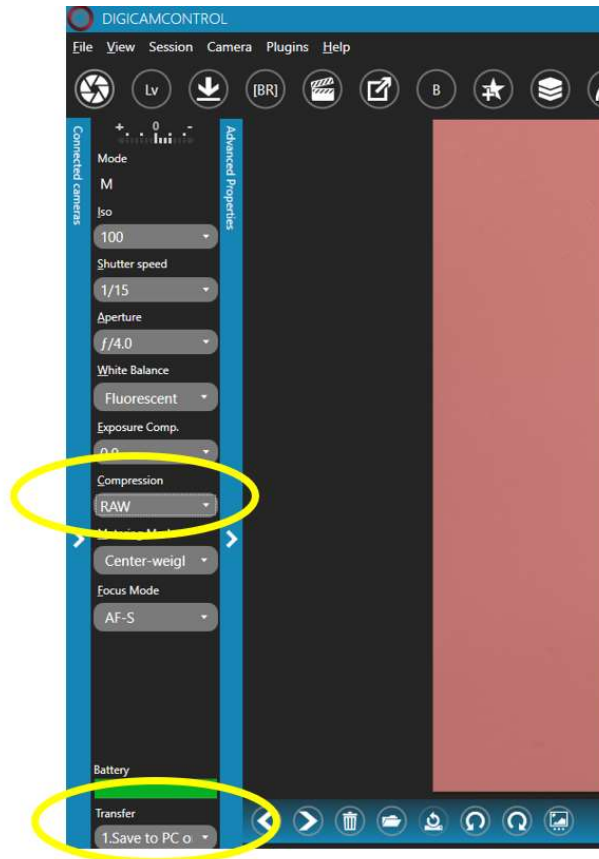
In the new window select the desired location on your PC.



On the left of the main window the “connected camera” tab shows some parameters for the camera.

We set up here the “**compression**” as “raw”.

We set up the “**transfer**” as “save to PC only” (or one of the other options, based on your needs).



Automatic shooting with the panohead

From FILE/ settings/ select “keyboard trigger”. Here we can select the keyboard combination to trigger the *capture*.